



THE  
**CASTLE**  
AND  
**FALCON**

VENUE PACK 2023



# CONTENTS

Castle & Falcon, 402 Moseley Road, Birmingham B12 9AT

[f](#) /castleandfalcon [@](#)castleandfalcon [@](#)castleandfalcon [castleandfalcon.com](#)

## 1. CONTACTS & LOCATION

CONTACTS

ADDRESS

PARKING

BY CAR

PUBLIC TRANSPORT

BY TRAIN

## 2. INTERNAL ACCESS AND FACILITIES

CAPACITY

STAGE DIMENSIONS

TIMES

LOAD IN

DRESSING ROOM

LIVE ROOM FLOOR PLAN

## 3. PA SPEC

FRONT OF HOUSE

MONITORS

CONTROL

MICROPHONES & DI BOXES

STANDS

LIGHTING DESK

LIGHTS & EFFECTS

DJ BOOTH & IN HOUSE DJ SYSTEM

## 4. RATES

## 5. HOTELS

## 6. MUSIC SHOPS

# CASTLE AND FALCON



## 1. CONTACTS & LOCATION

### 1.1 CONTACTS

For bookings  
[tom@castleandfalcon.com](mailto:tom@castleandfalcon.com)

For Production  
[ian.forster@live.co.uk](mailto:ian.forster@live.co.uk)

### 1.2 ADDRESS

Castle & Falcon, 402 Moseley Road, Birmingham B12 9AT

## GETTING HERE

### PARKING

There is a parking bay (for artist vehicles only) behind the venue with space for 2 cars or 1 large van. If you are travelling with one, or more, large tour buses/splitters please inform the us at least three weeks in advance and give details of vehicle registration plates in case there is a need for us to arrange additional parking. Failure to do so may result in insufficient parking facilities.

### BY CAR

We are located on **Moseley Road** in **Balsall Heath** just off the **A435**. Venue load in is via the rear entrance/parking back at the back of the venue.

### PUBLIC TRANSPORT

The Castle & Falcon sits directly on the 50 bus route. It is also a short walk from stops on the 8A and 8C bus routes.

### BY TRAIN/TAXI

The Castle & Falcon is an 8/10 minute taxi or bus ride from central Birmingham rail interchanges.  
A2B Taxis: 0121 744 1111

# 2. INTERNAL ACCESS AND FACILITIES



## CAPACITY

The venue is 400 sellable capacity.

## STAGE DIMENSIONS

5.50m x 4.80m x 0.9m

## TIMES

Standard Load In	3pm*
Standard Sound Check	4pm*
Earliest Doors Open to Public	7pm*
Standard Curfew	11pm
Latest Load Out	60 minutes after end of performance

\* Can be earlier upon request.

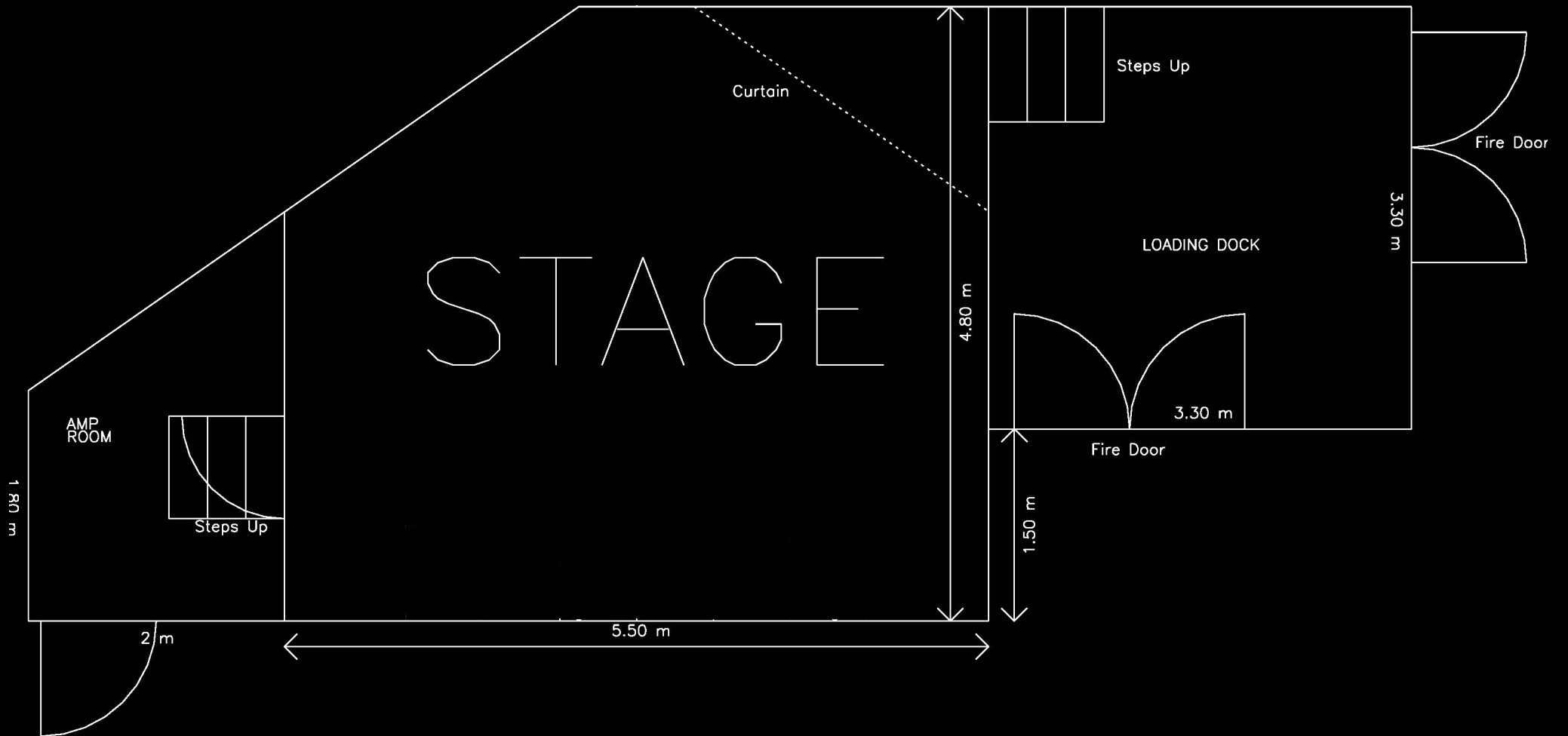
## LOAD IN

The venue is located on ground level. The load in is through the rear entrance at the back of the venue.

## DRESSING ROOM

There are two backstage areas set aside for headline acts. There is a private toilet. There is also a shower room backstage.

# LIVE ROOM FLOOR PLAN



# 3. PA SPEC



## FRONT OF HOUSE

Behringer Wing Mixing Desk

Cabinets (All D&B Audiotechnik):

4x C4 Top (Flown)

4x C4 Sub

1x B2 Infra Sub (All sub cabinets in mono)

2x 902-LS (E9) Infills (mono)

Amplification (All D&B Audiotechnik):

2x D12

1x A1

1x EPAC v2

## LINE SYSTEM

Behringer S32 (32 in/16 out)

10x Analogue XLR Lines from FOH to Stage (if Cat5e

lines are not in use)

2x Cat5e SFTP Lines from FOH to Stage

2x 3 pin DMX Lines from FOH to Stage

2x 6m 5 pin to 3 pin DMX Cables

2x 10m Cat5e Ethercon

2x 5m Cat5e Ethercon

7.5m 16 way XLR stage box

6m 8 way XLR stage box 10x 9m XLR

5m 8 way XLR stage box

18x 9m XLR

36x 5m XLR

22x 3m XLR

3x 1.5m 4 Pole NL4

3x 3m 4 Pole NL4

3x 5m 4 Pole NL4

3x 7.5m 4 Pole NL4

## MONITORS

Cabinets (All D&B Audiotechnik):

4x Max15

1x C4 Top/C7 Sub Drum Fill

(5 way mix)

Amplification (All D&B Audiotechnik):

2x P1200a

2x EPAC v3

## MONITOR CONSOLE (SUBJECT TO HIRE):

Behringer X32 Compact

## MICROPHONES & DI BOXES

4x Orchid Classic Active DI

4x Orchid Micro Active DI

1x Shure Beta 91a

1x Shure Beta 52a

2x Sennheiser e609

3x Sennheiser e604

1x Sennheiser e904

3x Røde M5

4x Shure SM57

1x Shure Beta57a

5x Shure SM58

2x SE Electronics V7x

1x Shure PG48 Switch Mic

## POWER

9x 16a Single Phase Ceeform for backline

9x 16a to 4-gang 13a trailing sockets

1x 32a Single Phase Ceeform for guest audio/lighting

2x 20a Powercon Sockets at FOH

(Converters to 16a and

13a available)

## STANDS

9x K&M 25400 Tall Boom Stands

9x K&M 25905 Short Boom Stands

1x LP Claw

1x LP Gooseneck Claw

2x Gravity Amp Clamps

## LIGHTING DESK

1x Chamsys PC Wing with 15.6 touchscreen laptop

## DJ BOOTH & IN HOUSE DJ SYSTEM

1x Pioneer DJM800 Mixer

2x Pioneer CDJ2000

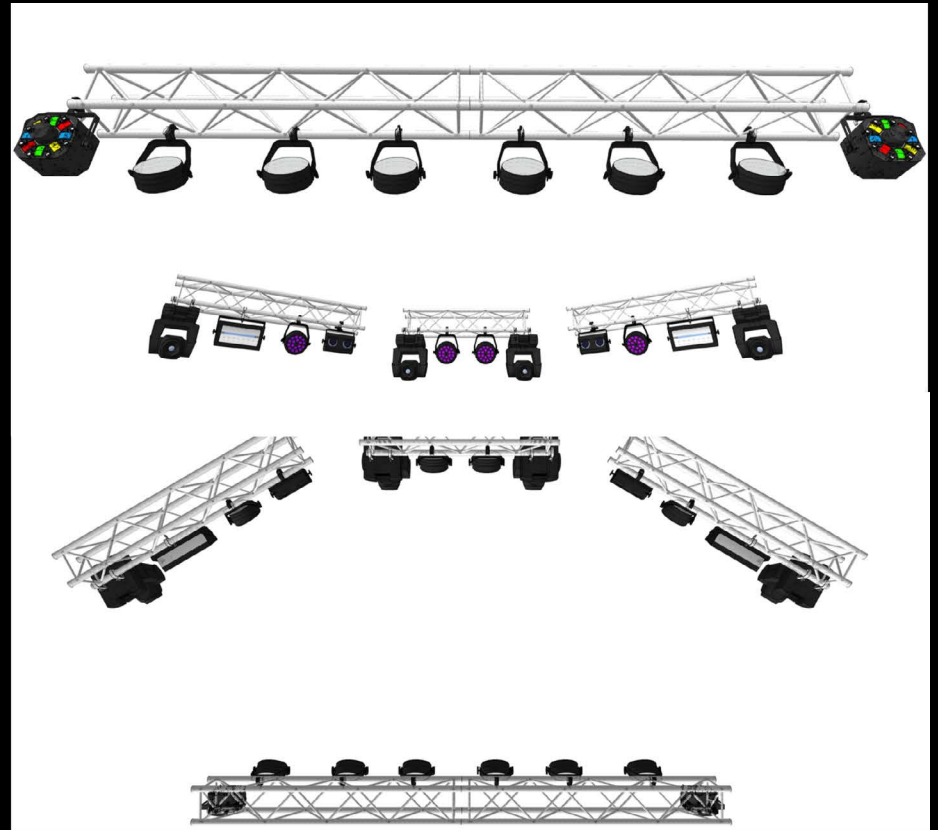
1x 8x4ft DJ Riser on 90cm Legs

Monitor Console and Engineer available for hire.

# 4. LIGHT SPEC



Manufacturer	Model	Mode	Address	Position
Showtec	Phantom 130 Spot	16 ch	001	Rear Truss
Showtec	Phantom 130 Spot	16 ch	017	Rear Truss
Showtec	Phantom 130 Spot	16 ch	033	Rear Truss
Showtec	Phantom 130 Spot	16 ch	049	Rear Truss
Showtec	Compact Par Tri 18 mkII	6 ch	065	Rear Truss
Showtec	Compact Par Tri 18 mkII	6 ch	071	Rear Truss
Showtec	Compact Par Tri 18 mkII	6 ch	077	Rear Truss
Showtec	Compact Par Tri 18 mkII	6 ch	083	Rear Truss
Showtec	Titan Strobe	3 ch	089	Rear Truss
Showtec	Titan Strobe	3 ch	092	Rear Truss
Generic	2 Cell Molefay	1 ch	095	Rear Truss
Generic	2 Cell Molefay	1 ch	096	Rear Truss
ADJ	Mega Tri Par Profile +	6 ch	097	Front Truss
ADJ	Mega Tri Par Profile	6 ch	103	Front Truss
ADJ	Mega Tri Par Profile	6 ch	109	Front Truss
ADJ	Mega Tri Par Profile +	6 ch	115	Front Truss
ADJ	Mega Tri Par Profile +	6 ch	121	Front Truss
ADJ	Mega Tri Par Profile +	6 ch	127	Front Truss
Showtec	Cyclone 4	4 ch	133	Front Truss
Showtec	Cyclone 4	4 ch	137	Front Truss
Generic	Fan	1 ch	500	USL
Generic	Haze	1 ch	501	USL



## CASTLE AND FALCON

# 5. RATES

**400 SELLABLE STANDING CAPACITY VENUE RENTAL:  
£400 + PRS + VAT**

**VENUE RENTAL INCLUDES:**

PA & Lights (as per our spec)  
In-House Sound Engineer & Box Office Staff  
Local Advertising Contribution & Wireless Internet  
All the above is based on a 3pm – 11pm live show  
Any additional requests, earlier load ins etc, please email us.  
No merchandise fees

**ADDITIONAL CHARGES**

In-House Rep - £10 per hour  
Additional Box Office Staff - £10 per hour  
Lighting Engineer - £100  
Stage Hands - Standard Rates Extended Operational Hours

**AGE RESTRICTIONS**

Ages 14+ (under 16s must be accompanied by an adult)

**ALL VENUE ENQUIRIES**

[enquiries@castleandfalcon.com](mailto:enquiries@castleandfalcon.com)





# 6. HOTELS

CASTLE AND FALCON

## Ibis Birmingham Bordesley Circus

1 Bordesley Park Rd, Birmingham B10 0PD • [ibis.com](https://www.ibis.com)



1.5  
MILES

## Ibis Budget Birmingham Centre

Great Colmore St, Birmingham B15 2AP • [ibis.com](https://www.ibis.com)



1.5  
MILES

## Aparthotel Adagio Birmingham City Centre

131 Digbeth High St, Birmingham B5 6DR • [adagio-city.com](https://www.adagio-city.com)



1.8  
MILES

## Moseley Arms B&B

105 Ravenhurst St, Birmingham B12 0HB • [themoseleyarms.co.uk](https://www.themoseleyarms.co.uk)



1.0  
MILES

# 7. MUSIC SHOPS

CASTLE AND FALCON

## PMT Birmingham

Trident Retail Park, Unit 4, 6 Westley St, Birmingham B9 4EH

0121 359 5056

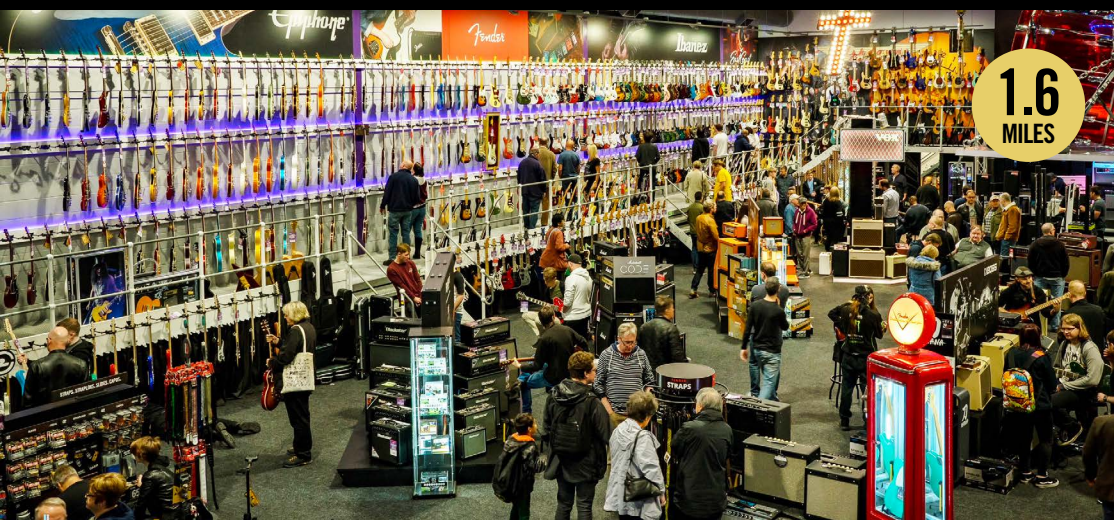
[pmtonline.co.uk](http://pmtonline.co.uk)

## Fair Deal Music

79-83 Holloway Head, Birmingham B1 1QP

0121 643 1685

[fairdealmusic.co.uk](http://fairdealmusic.co.uk)



1.6  
MILES

## Robannas Studios

Robanna House, 54 Cliveland St, Birmingham B19 3SN

0121 333 3201

[robannas-studios.co.uk](http://robannas-studios.co.uk)

## Muthers Studio

14 Rea St South, Birmingham B5 6LB

0121 622 7110

[muthersstudio.co.uk](http://muthersstudio.co.uk)



1.7  
MILES



3.2  
MILES



1.2  
MILES